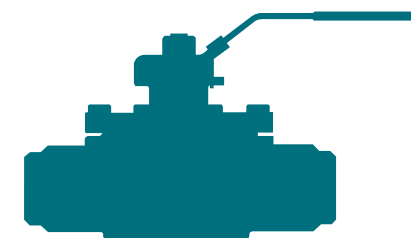


Sanko's Quick Cartridge Type Ball Valve

三幸
快插式
球阀
K型



空气导向阀



手动阀

 三幸金属株式会社

本社地址：邮编550-0004 大阪市西区初本町1丁目16番17号 电话：06-6441-6431(总机)

工厂地址：邮编639-0241 奈良县香芝市高188-1 电话：0745-78-4552(总机)

Main Office : Utsubo Honmachi 1-16-17, Nishi-ku, Osaka, 〒550-0004, Japan. TEL06-6441-6431 FAX06-6441-6548

Factory : Kashiba-Taka 188-1, Nara, 〒639-0241, Japan. TEL0745-78-4552 FAX0745-78-4562

SANKO METAL CO.,LTD.

实现成套设备配管系统的 省力化、合理化！

Ideal for PlantPipe Systems!



1

卸下阀盖螺栓，打开阀盖。
Remove bonnet bolt and lift off cover.

2

将手指插入球体的端口或者将螺栓拧到球体上部沟槽的螺纹孔内，拆下球体。
To pull out the ball, should insert the finger into the port of ball or screw in the bolt into the tap hole in the groove on the top of the ball, and pull out.

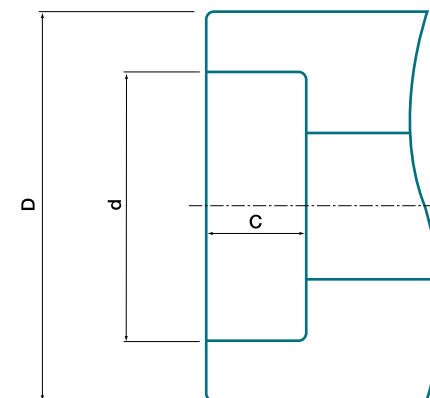
拆卸、组装简单 & 快速！

Assembly and Disassembly is Speedy and Easy!

承插焊连接型端部尺寸表

Part dimension for socket welding under diameters of 50A

单位 Unit:mm



口径 Nominal size		d	D	C
A	B			
6	1/8	11.0	17	13
8	1/4	14.3	20	13
10	3/8	17.8	24	13
15	1/2	22.2	30	13
20	3/4	27.7	35	13
25	1	34.5	43	13
32	1-1/4	43.2	53	13
40	1-1/2	49.1	59	13
50	2	61.1	71	16

三幸插装球阀的使用注意事项

- 选用满足使用要求的正确阀门。充分考虑使用流体、使用压力、使用温度、杂物的有无等。
- 在进行安装阀门的配管时，确认阀门的介质流向，安装至正确的方向。
- 在进行安装阀门的配管时，尽可能地注意不要引起配管应力，进行正确的配管施工。
- 阀门的保管，禁止在手轮中途启闭状态下的长期放置。否则可能会引起软阀座的塑性变形，导致阀座泄露。
- 避免阀门在阀门前端的阀栓打开状态下的放置。当阀门中混入异物时，可能会造成阀座面、球体表面的损伤等，导致扭矩异常或阀座泄露。
- 开始使用经过长期放置保存的阀门时，即便是正常的阀门也可能存在故障的情况。由于压盖部分的歪曲以及阀座面的粘着、生锈等原因，有时操纵手轮时会感到较为沉重。此种情况下，略微拧紧压盖螺母，以木锤等轻轻敲击手轮，略微使其振动，即可顺利运转。
- 使用阀门时，通过采取预防性的维护保养措施可以延长阀门寿命，因此请勿忘记进行定期检查维修。
- 按步骤正确进行拆卸、检修、组装。

※在订购阀门之际，请务必索取交货图纸。

USING YOUR SANKO'S CARTRIDGE TYPE BALL VALVE

- Only use materials which fit the valve's specifications. Carefully consider the material you choose and the pressure and temperature you use it, as well as if the material has particles in it.
- Attach the valve properly to the direction the material will flow.
- Do not force or use piping stress when attaching the valve and attach as per the instructions.
- Do not leave the handle in a half open position for long periods of time. It could bend the seat and may cause leakage.
- Avoid leaving the opening of the valve exposed for long periods of time. Outside materials may cause damage to the surface of the ball or seat and may lead to leakage from the valve.
- As with any long term use valve, there may seem to be some problems when it is first attached. The handle may seem stiff due to rusting, the grand may rattle and the seat may seem stuck at times. At these times, retighten the grand nut, tap the handle with a wooden mallet or slightly tap the valve to fix the problem.
- For long life of your valve, perform regular maintenance inspections. Always do periodic checks.
- Always follow the correct order when assembling and disassembling your valve.

※Please Request Drawing when Planing Order for Valve.

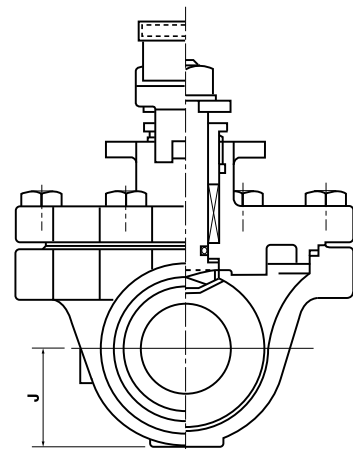
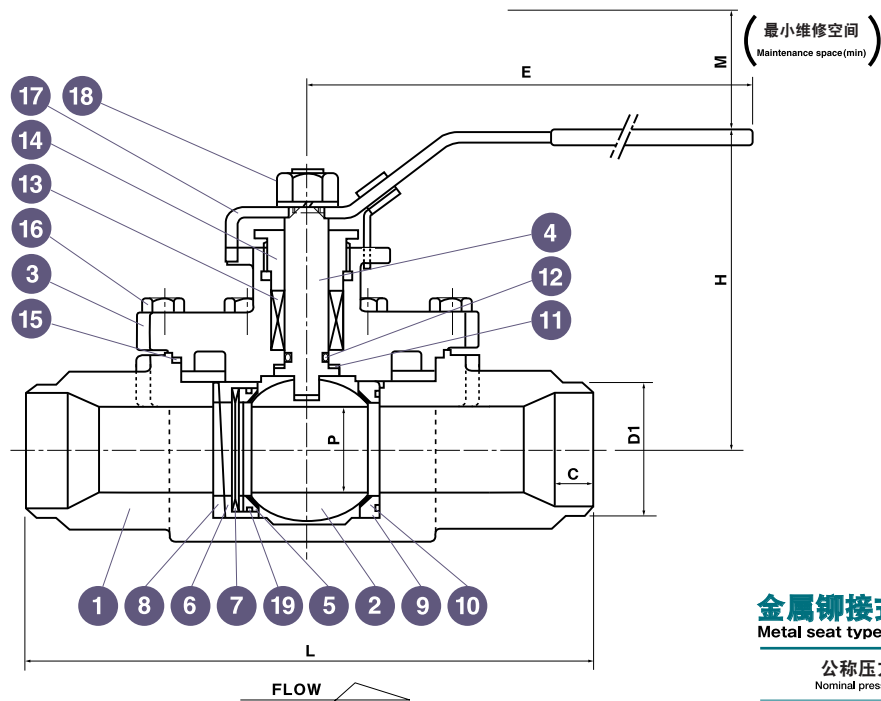
金属硬密封型

级别 / 150 · 300 JIS / 10K · 20K

Metal Seat Type

Class / 150 · 300 JIS / 10K · 20K

Sanko's
Full Bore Type
Cartridge Ball Valve



金属铆接式阀门规格

Metal seat type specification .

公称压力 Nominal pressure	JIS 20K	级别 300
使用流体 Working fluid	气体、水、空气、油、泥浆等 Gas, Water, Air, Oil, Slurry etc.	
最高使用压力 Maximum permissible working pressure	3.4MPa	4.96MPa
最高使用温度 Maximum permissible working temperature	-20~250 C	
耐压试验压力 Shell test press.	5.1MPa	7.5MPa
阀座密封性试验压力 Seat leakage test press.	3.74MPa	5.5MPa

金属硬密封型零部件清单

Metal seat type parts list.

编号	零部件名称	数量	材质				备注
1	阀体 Body	1	SCS13A	SCS19A	SCS14A	SCS16A	
2	球体 Ball	1	SUS304	SUS304L	SUS316	SUS316L	硬质镀铬处理 HCr plating
3	阀盖 Bonnet	1	SCS13A	SCS19A	SCS14A	SCS16A	
4	阀杆 Stem	1	SUS304	SUS304L	SUS316	SUS316L	
5	一次侧密封座 Ball seat (valve inlet)	1	SUS304	SUS304L	SUS316	SUS316L	司太立合金 (Stellite) Stellite weldsurfacing
6	一次侧阀座 Seat retainer (valve inlet)	1	SUS304	SUS304L	SUS316	SUS316L	
7	碟形弹簧 Coned disk spring	2	SUS304				调质处理
8	上密封座 Back seat	1	加强型 PTFE (铁氟龙) 或者 PEEK (聚醚醚酮) 树脂				
9	二次侧密封座 Ball seat (valve outlet)	1		SUS304L	SUS316	SUS316L	司太立合金 (Stellite) Stellite weldsurfacing
10	O 形圈 O-ring	1	氟橡胶 Fluorocarbon rubber				
11	推力阀座 Thrust sheet	1	加强型 PTFE (铁氟龙) RF-PTFE				
12	O 形圈 O-ring	1	氟橡胶 Fluorocarbon rubber				
13	压盖填料 Gland packing	1SET	石墨或者 PTFE (铁氟龙) Grafal				
14	压盖螺丝 Gland screw	1	SUS304				
15	密封垫片 Gasket	1	加强型 PTFE (铁氟龙) / PFA RF-PTFE / PFA				
16	阀盖螺栓 Bonnet bolt	1SET	SUS630				热处理 H1025 Heat treatment
17	手柄杆 Handle lever	1	SUS304				
18	带锁紧螺母 Nut with SW	1SET	SUS304				
19	O 形圈 O-ring	1	氟橡胶 Fluorocarbon rubber				



取出球体后，拆卸分解内部组件。
After removing the ball, Take out each retainers.
拆卸所卸下的阀座的球座、O 形圈。
Remove the ball-seat and O-ring of the pulled out retainers.

拆开阀盖组件，拆卸工作全部完成。
Disassembly of the bonnet assembly is now complete.

检修
inspection

检修各零部件之际，尤其需要检查球体、阀座垫、O 形圈等是否有损伤、以及损耗的程度。如发现有所损伤、磨损等情况，应更换新的零部件。若未发现存在异常情况，则仅需进行清洗并重新组装。
When inspecting each piece, check for any scratches or erosion on the ball, valve seat and O ring. Replace scratched or eroded parts with new ones. If no problems exist, reassemble after carefully cleaning and rinsing each part.

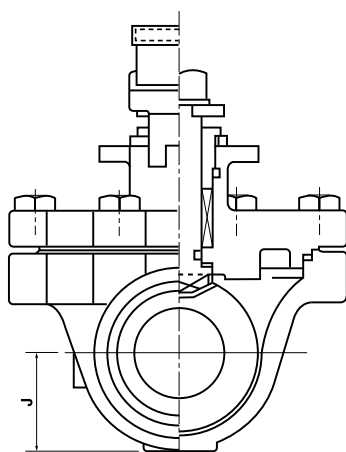
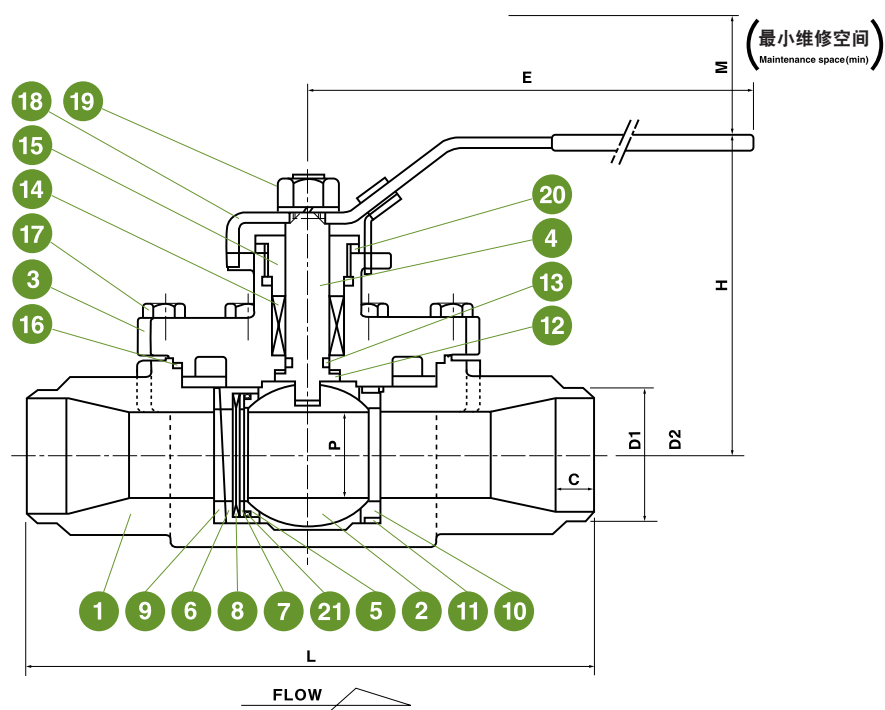
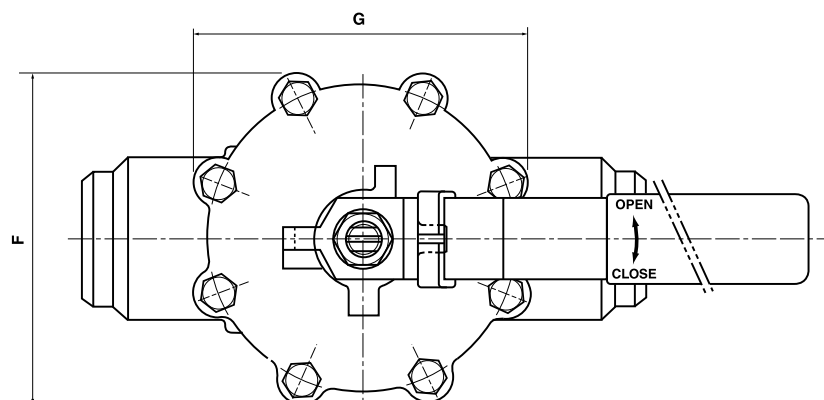


标准型

级别 / 150 · 300 JIS / 10K · 20K

Standard Type

Class / 150 · 300 JIS / 10K · 20K



标准型·金属硬密封型尺寸表

Standard type · Metal seat type dimension list.

单位 Unit:mm

口径 Nominal size		P	D1	L	H	C	E	F	G	J	M	产品重量 (kg) Weight	计划 Cv 值 (流量系数) Cv Valve
A	B												
6	1/8	10	10.5	100	74	10	100	60	60	16	80	0.9	2.2
8	1/4	10	13.8	100	74	10	100	60	60	16	80	0.9	6.5
10	3/8	10	17.3	102	74	10	100	60	60	16	80	1.0	12
15	1/2	15	21.7	108	85	10	150	71	71	20	80	1.5	23
20	3/4	20	27.2	117	88	13	150	78	78	24	80	1.8	40
25	1	20	34.0	127	88	13	150	78	78	24	80	2.0	36
32	1-1/4	32	42.7	178	120	13	200	115	115	34	100	5.2	200
40	1-1/2	32	48.6	190	120	13	200	115	115	34	100	5.8	180
50	2	50	60.5	216	135	16	200	161	161	52	100	6.0	300
65	2-1/2	65	76.3	283	170	15	300	212	212	65	150	16	600
80	3	65	89.1	283	170	15	300	212	212	65	150	16	540

标准型 阀门规格

Standard type specification.

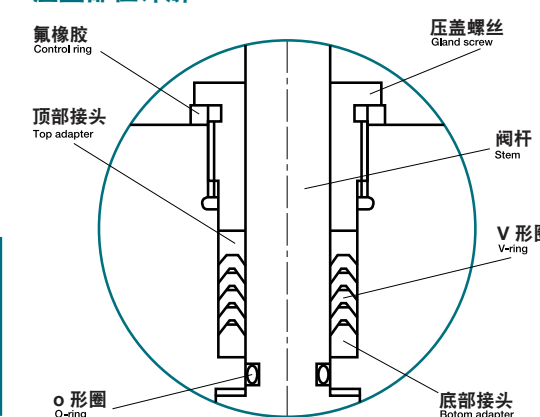
公称压力 Nominal pressure	JIS 20K	级别 300
使用流体 Working fluid	气体、水、空气、油、泥浆等 Gas, Water, Air, Oil etc.	
最高使用压力 Maximum permissible working pressure	3.4MPa	4.96MPa
最高使用温度 Maximum permissible working temperature	-20~200 C	
耐压试验压力 Shell test press.	5.1MPa	7.5MPa
阀座密封性试验压力 Seat leakage test press.	3.74MPa	5.5MPa

标准型 零部件清单

Standard type parts list.

编号	零部件名称	数量	材质				备注
1	阀体 Body	1	SCS13A	SCS19A	SCS14A	SCS16A	
2	球体 Ball	1	SUS304	SUS304L	SUS316	SUS316L	
3	阀盖 Bonnet	1	SCS13A	SCS19A	SCS14A	SCS16A	
4	阀杆 Stem	1	SUS304	SUS304L	SUS316	SUS316L	
5	一次侧密封座 Ball seat (valve inlet)	1	加强型 PTFE (铁氟龙) RF,PTFE				
6	一次侧阀座 Seat retainer (valve inlet)	1	SUS304	SUS304L	SUS316	SUS316L	
7	环 Ring	1	SUS304	SUS304L	SUS316	SUS316L	
8	碟形弹簧 Coned disk spring	2	SUS304				H 调质度 调质处理
9	上密封座 Back seat	1	加强型 PTFE (铁氟龙) RF,PTFE				
10	二次侧密封座 Ball seat (valve outlet)	1	加强型 PTFE (铁氟龙) RF,PTFE				
11	座圈 Seat retainer (valve outlet)	1	SUS304	SUS304L	SUS316	SUS316L	
12	推力阀座 Thrust sheet	1	加强型 PTFE (铁氟龙) RF,PTFE				
13	O 形圈 O-ring	1	氟橡胶 Fluorocarbon rubber				
14	压盖填料 Gland packing	1SET	加强型 PTFE (铁氟龙) RF,PTFE				
15	压盖螺丝 Gland screw	1	SUS304				
16	密封垫片 Gasket	1	PTFE				
17	阀盖螺栓 Bonnet bolt	1SET	SUS630				热处理 H1025 Heat treatment
18	手柄杆 Handle lever	1	SUS304				
19	带锁紧螺母 Nut with SW	1SET	SUS304				
20	控制环 Control ring	1	SUS304				
21	O 形圈 O-ring	1	氟橡胶 Fluorocarbon rubber				

压盖部位详解



14 V 形填料的调控方法

- ② 拔出控制环, ③ 拧紧压盖螺丝
- ⑤ 直至碰到阀盖。

How to retighten the V-packings.
Remove the retightening control ring, and tighten gland screw until the gland screw will contact with the bonnet.