

三幸金属株式会社
会社案内

Company Profile

August, 2014

Sanko Metal Co., Ltd.

Company Location



Headquarters

*1-16-17 Utsubo Honmachi, Nishi-ku, Osaka City, Osaka
Prefecture 550-0004 Japan*

Phone: (06) 6441-6431

Fax: (06) 6441-6548

Works

*188-1 Taka, Kashiba City, Nara Prefecture
639-0241 Japan*

Phone: (0745) 78-4552

Fax: (0745) 78-4562



Overview of Company

Establishment: *November 15, 1952 (business started in September 1946)*

Capital: *10 million yen*

Representative director: *Takuma Iwamoto*

Number of employees:

Head office in Honmachi: 25

Kashiba factory : 24

History of Company

- Sept. 1946: *Started Sanko Kogyosho in Kita-ku, Osaka, selling piping items to Nippon Hatsusoden (former electric power company)*
- Nov. 1952: *Moved to 1-3-27 Utsubo Honmachi, Nishi-ku, Osaka City and established Sanko Metal Co., Ltd. with capital of 1.2 million yen*
- Dec. 1952: *Invested capital in Nisshin Valve Manufacturing Co., Ltd. located in Nishinari-ku, Osaka City, and started selling ball cocks and valves for tank lorries*
- May 1961: *Developed the special ball valve*
- May 1962: *Had the special ball valve patented*
- Dec. 1964: *Built a new factory in Miyakojima-ku, Osaka City*
- Apr. 1965: *Accounted for 80% in the market of ball valves for tank lorries*
- Apr. 1966: *Developed the cartridge type ball valve*
- Sept. 1967- Sep. 1970: *Increased the capital to 1.8 million yen (1967), to 2.5 million yen (1968), to 3 million yen (1970)*
- Jan. 1973: *Expanded the Miyakojima factory*
- Apr. 1975: *Developed the S type cartridge ball valve for use in various electric power plants of power companies*
- Sept. 1976: *Increased the capital to 4.5 million yen*
- Oct. 1981: *Had the S type cartridge ball valve patented*
- Sept. 1984: *Increased the capital to 5.85 million yen*
- Oct. 1985: *Developed the new mini-cartridge ball valve*
- Sept. 1987: *Increased the capital to 9.12 million yen*
- Oct. 1987: *Had the new mini-cartridge ball valve patented as a utility model*
- Mar. 1989: *Completed a new factory in Kashiba City, Nara Prefecture and moved the entire equipment at the Miyakojima factory to this new factory*
- May 1989: *Celebrated the completion of the new factory and the 40th anniversary at Osaka Grand Hotel*
- Mar. 1990: *Develop the ceramic ball valve and PEEK(super engineering plastics) ball valve*
- Apr. 1991: *Expanded the capability of Maintenance Department for the maintenance of our ball valves, imported safety valves, etc.*
- Oct. 1991: *Had the PEEK(super engineering plastics) ball valve patented as a utility model.*
- Aug. 1992: *The founder, Shin-ichi Iwamoto retired and Takuma Iwamoto took up the position of representative director.*
- Oct. 1994: *Increased the capital to 10 million yen. Completed a series of the improved models of ball valves for power plants*
- Apr. 1996: *Had the factory qualified as a high-pressure gas equipment factory by the Minister of International Trade and Industry.*
- Feb. 1997: *Moved the office to our own building located at 1-16-17 Utsubo Honmachi, Nishi-ku, Osaka City.*
- Aug. 1998: *The improvement model of ball valve for atomic reactor plant's use were made into a series*
- Jan. 2000: *Received the utility model rights for the improved ball valve model for use in atomic reactor plants(Japan,Taiwan,S.Korea)*
- Aug. 2002: *Had the factory Quality management system certified by JAPEIC , ISO 9001:2000 registered QSR-097*
- Nov. 2009: *OEM production of JIS-10K 2pcs side entry ball valve started in China*
- June 2011: *Had the factory Quality management system certified by JAPEIC , ISO 9001:2008 registered QSR-097*
- Jan. 2013: *Started production of API 2pcs side entry ball valve under the collaboration with China manufacturer*

Business categories

1. Manufacture and sales of ball valves (factory certified Quality Management System by JAPEIC , ISO 9001:2008)

Ball valves for electric, chemical, petroleum plants and nuclear power plant & polluted water

Ball valves for tank lorries and containers

High speed emergency shutoff ball valves for gas turbine

Staging valve for gas turbine combustion control

High-temperature, high-pressure ball valves for fuel cell

Anti-wear ball valves for coal slurry, etc.

2. Manufacture and sales of other types of valves

Safety valves for petroleum containers, butterfly valves, and strainers

3. Instrumentation and valve maintenance (general construction business permit No. 11538)

Thermal, nuclear power plants (controlled area =radiation dose record booklet) and other plants

4. Agency for the several company

Utsue Valve Co., Ltd. ; Sales of U.T.E. cast steel valves, special cast steel valves, small forged valves (EXCO-F), large CFD forged valves, etc.

Tomoe Valve Co., Ltd. ; Sales of patented Tomoe type butterfly valves

Hitachi Metals, Ltd. ; Sales and maintenance of Hitachi valve products

Dresser Japan, Ltd. ; Sales and maintenance of Hancock forged valves, consolidated safety valves, safety relief valves, automatic control valves, etc.

Fujikin Co., Ltd. ; Sales of instrumented valves, ceramic valves, joints, etc.

Tokyo Kogyo Trading Co., Ltd. ; Sales of electric heating cables for anti-freezing purpose, thermal insulators, and other general items

C.K.D., Ltd. ; Sales of solenoid valves, etc.

Motoyama Manufacturing Co., Ltd. ; Sales of control valves, safety valves, etc.

Sample of Ball valve manufactured

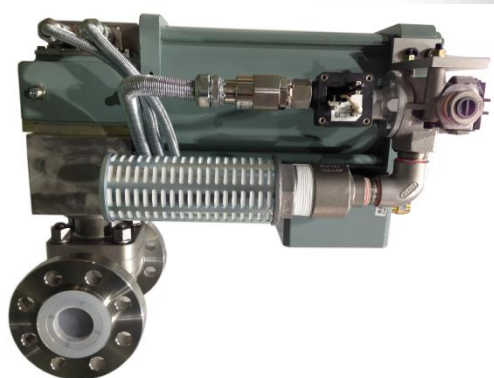
*Quick cartridge type ball valve-
K Type Class 150,300*



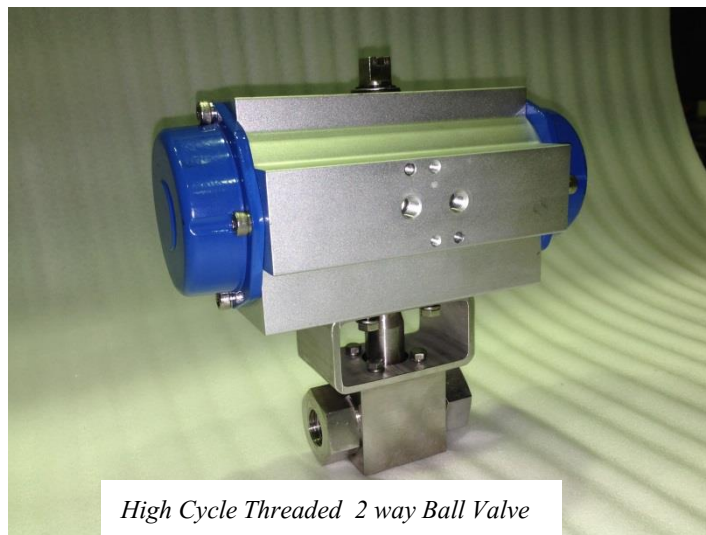
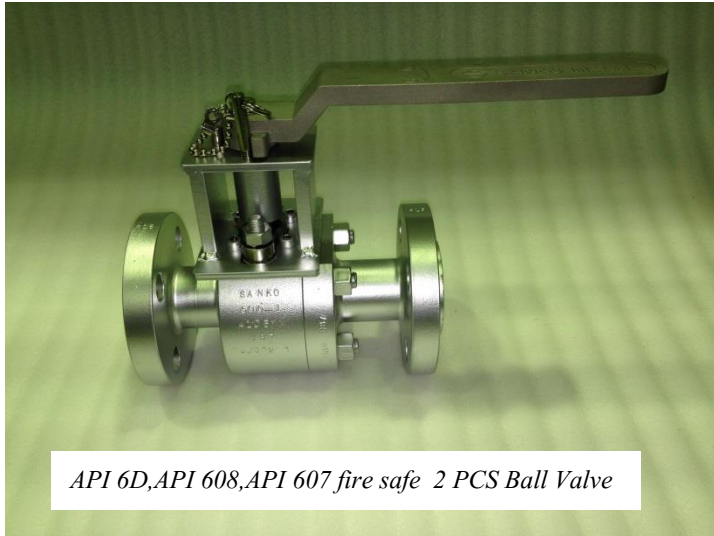
*Quick cartridge type ball valve-
F Type Class 600,900*



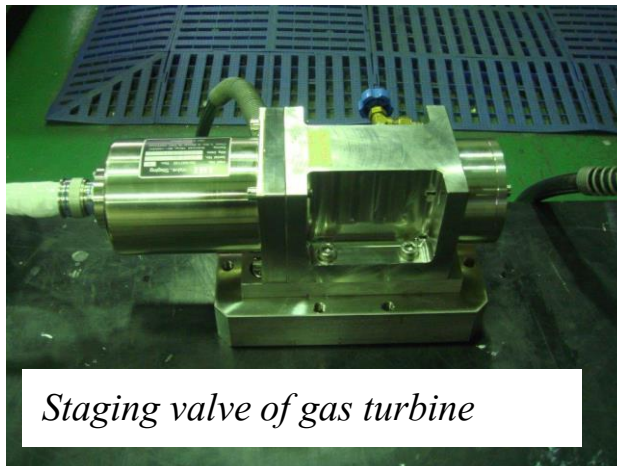
*High Speed Emergency
shut-off valve
Class300,600*



Sample of Ball valve manufactured



Sample of Ball valve manufactured



Main Customers (in random order)

The Kansai Electric Power Co., Inc.; Head Office, Osaka Minami Branch, Kobe Branch, Himeji Branch, Wakayama Branch, Kyoto Branch, Wakasa Branch, and their power plants

Kanden Plant Corporation; Head Office, Osaka Thermal Electric Power Branch, Himeji Thermal Electric Power Branch, Wakayama Branch, Wakasa Nuclear Power Branch, and their power plants

Kanden Engineering Corporation; Head Office and other offices at thermal electric and nuclear power plants

J-POWER Co., Ltd. Osaka Branch

Japan Nuclear Power Generation Co., Ltd.

Wakayama Joint Thermal Electric Power Co., Ltd.

Japan Nuclear Fuel Limited.

Chubu Electric Power Co., Inc.

Chugoku Electric Power Co., Inc.

IHI Co., Ltd.

Mitsubishi Heavy Industries, Ltd.

Hitachi, GE Nuclear Energy Ltd.

Hitachi Engineering AND Service, Ltd.

Tsurumi manufacturing Co., Ltd.

Ebara Corporation

Babcock Hitachi, Ltd.

Toshiba Plant Systems Co., Ltd.

Fuji Electric Co., Ltd.

Kawasaki Heavy Industries, Ltd.

JFE Engineering Co, Ltd.

Iwantani International Corp.

Kuriharant, Ltd.

Toho Car Corp./ Tokyu Motor Service Corp.

Shin Maywa Industry Co., Ltd./ Shin Maywa Auto-Engineering, Ltd.

Kyokuto Kaihatsu Co., Ltd.

Showa Aircraft Industry Co., Ltd.

Yano Special Automobile Co., Ltd.

Granted or Pending Patents and Utility Model Patents

<i>Sept. 1970:</i>	<i>No. 911919</i>	<i>Valve seat pressing device in ball valve</i>
<i>June 1972:</i>	<i>No. 969721</i>	<i>Valve seat sliding type ball valve by mechanism using gears and screws</i>
<i>Mar. 1975:</i>	<i>No. 1071348</i>	<i>Four-way ball valve</i>
<i>May 1975:</i>	<i>No. 1080507</i>	<i>Valve seat fitting device in ball valve</i>
<i>Aug. 1975:</i>	<i>No. 1091830</i>	<i>Seal in ball valve</i>
<i>June 1976:</i>	<i>No. 1131499</i>	<i>Valve seat</i>
<i>Mar. 1979:</i>	<i>No. 1279013</i>	<i>Cartridge type valve and valve seat fixation device</i>
<i>May 1979:</i>	<i>No. 1311331</i>	<i>Sheet packing in ball valve</i>
<i>Oct. 1980:</i>	<i>No. 1351578</i>	<i>Sealing and adjusting ring in cartridge type ball valve</i>
<i>Jan. 1981:</i>	<i>No. 1364452</i>	<i>Device for installing and removing cartridge type ball valves</i>
<i>Nov. 1981:</i>	<i>No. 1074777</i>	<i>Cartridge type ball valve</i>
<i>Feb. 1984:</i>	<i>No. 1511498</i>	<i>Cartridge type ball valve</i>
<i>May 1987:</i>	<i>No. 1676303</i>	<i>Interlocked parent-child ball valve</i>
<i>Oct. 1987:</i>	<i>No. 62-161484</i>	<i>New mini-cartridge type ball valve</i>
<i>Apr. 1988:</i>	<i>No. 1726645</i>	<i>Machine for treatment of valve seat surfaces</i>
<i>May 1988:</i>	<i>No. 63-60183</i>	<i>Cartridge type ball valve made of PEEK(super engineering plastics)</i>
<i>July 1989:</i>	<i>No. 1-88559</i>	<i>Cartridge type ball valve</i>
<i>July 1990:</i>	<i>No. 140080</i>	<i>Valve seat mechanism in cartridge type ball valves</i>
<i>Oct. 1991:</i>	<i>No. 3-83855</i>	<i>Ball valve made of PEEK(super engineering plastics)</i>
<i>Feb. 1999:</i>	<i>No. 11-03112</i>	<i>Top entry ball valve made of K-type(for Nuclear) (Japan,Taiwan,Korea)</i>

Certification



HITACHI
認定証

会社名: 三幸金属株式会社 香芝工場
所在地: 奈良県香芝市高188-1
有効期間: 2014年8月1日~2017年7月31日
対象製品: ボールバルブ
登録番号: NK-0955

貴社は、当事業所 品質保証体制 認定基準に基づき審査した結果、基準に適合していることが確認できましたので、ここに認定致します。

株式会社 日立製作所
電カシステム社 品質保証本部長
小嶋 真作

日立G Eニュークリア・エナジー株式会社
原子力品質保証本部長
三村 靖

認定書
三幸金属株式会社
香芝工場 殿

貴社は当社原動機事業本部取引先認定規定に基づく審査の結果、認可された貴社の品質保証システムに従って製作する下記対象品目(原子力プラント向け製品を除く)について当社原動機事業本部横浜地区・高砂地区・長崎地区の取引先として認定します。

平成 24 年 8 月 28 日

三菱重工業株式会社
品質保証部長 井上 慎也

記

所在地: 奈良県香芝市高188-1

対象品目: ボール弁

有効期間: 平成 27 年 8 月 31 日

Pass the Audit for the client below.

Toshiba Plant Systems & Services Corp. : Feb.20,2013

Nippon Steel & Sumikin Engineering : May 10,2013



認定書
三幸金属株式会社 殿

貴社は、弊事業部品質保証制度の規定に基づき品質監査の結果、下記対象品目において、認定サプライヤーであることを認めます。

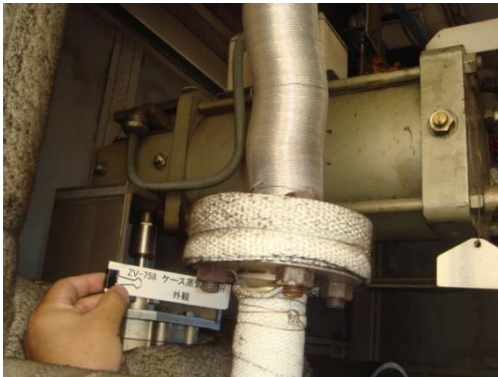
記

対象品目	バルブ
初回登録日	平成 21 年 1 月 23 日
更新日	平成 24 年 6 月 26 日
有効期限	平成 27 年 6 月 25 日

株式会社 IHI
エネルギーセクター
原動機プロジェクト統括部
品質保証G 水澤 実
部長

Photo of emergency shut-off ball valve

Figure on site



Maintenance of valve



Gas turbine case steam shut-off valve

Open to Close; 0.085 sec

Steam; 2MPag, 250 °C

Figure on site



Maintenance of valve



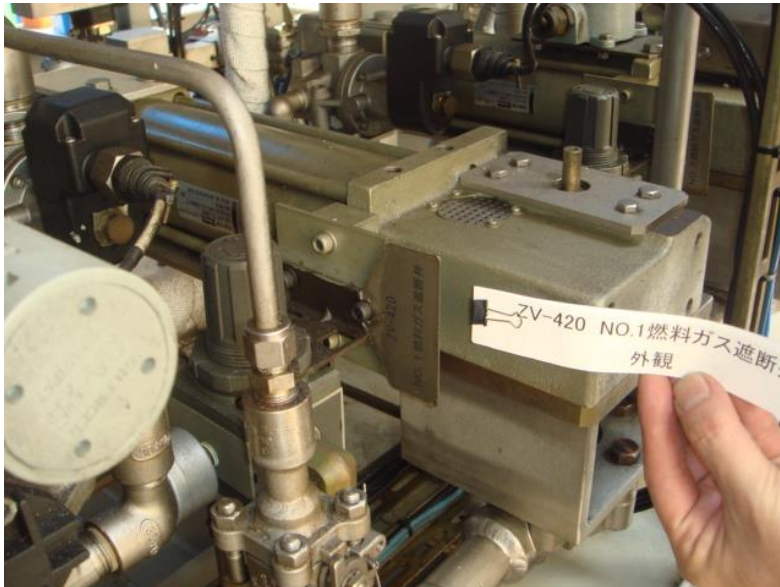
Gas turbine nozzle steam shut-off valve

Open to Close; 0.085 sec

Steam; 2MPag, sat.

Photo of emergency shut-off ball valve

Figure on site



Fuel gas shut-off valve

Open to Close; 0.085 sec

Fuel gas; 2MPag, amb. To 70 degC

Maintenance of valve

